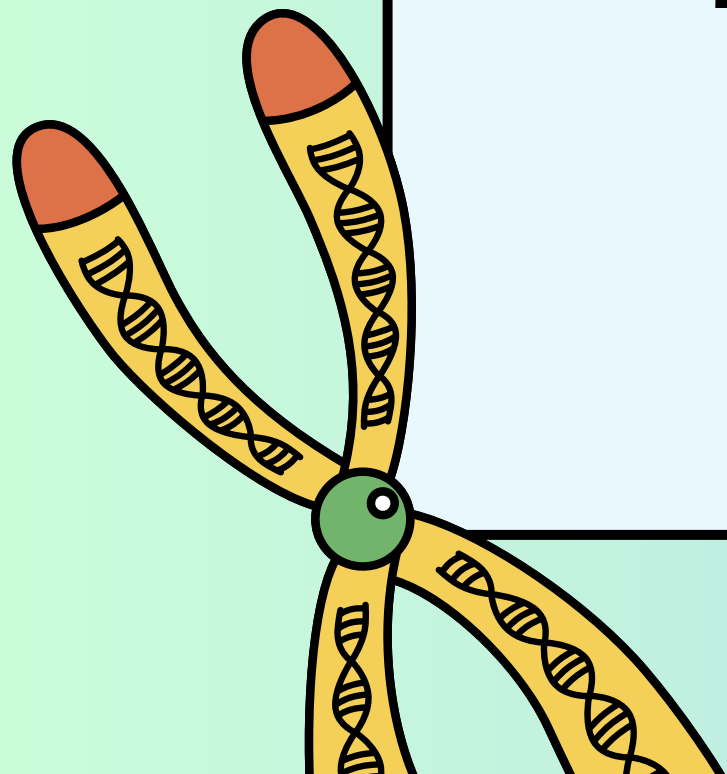
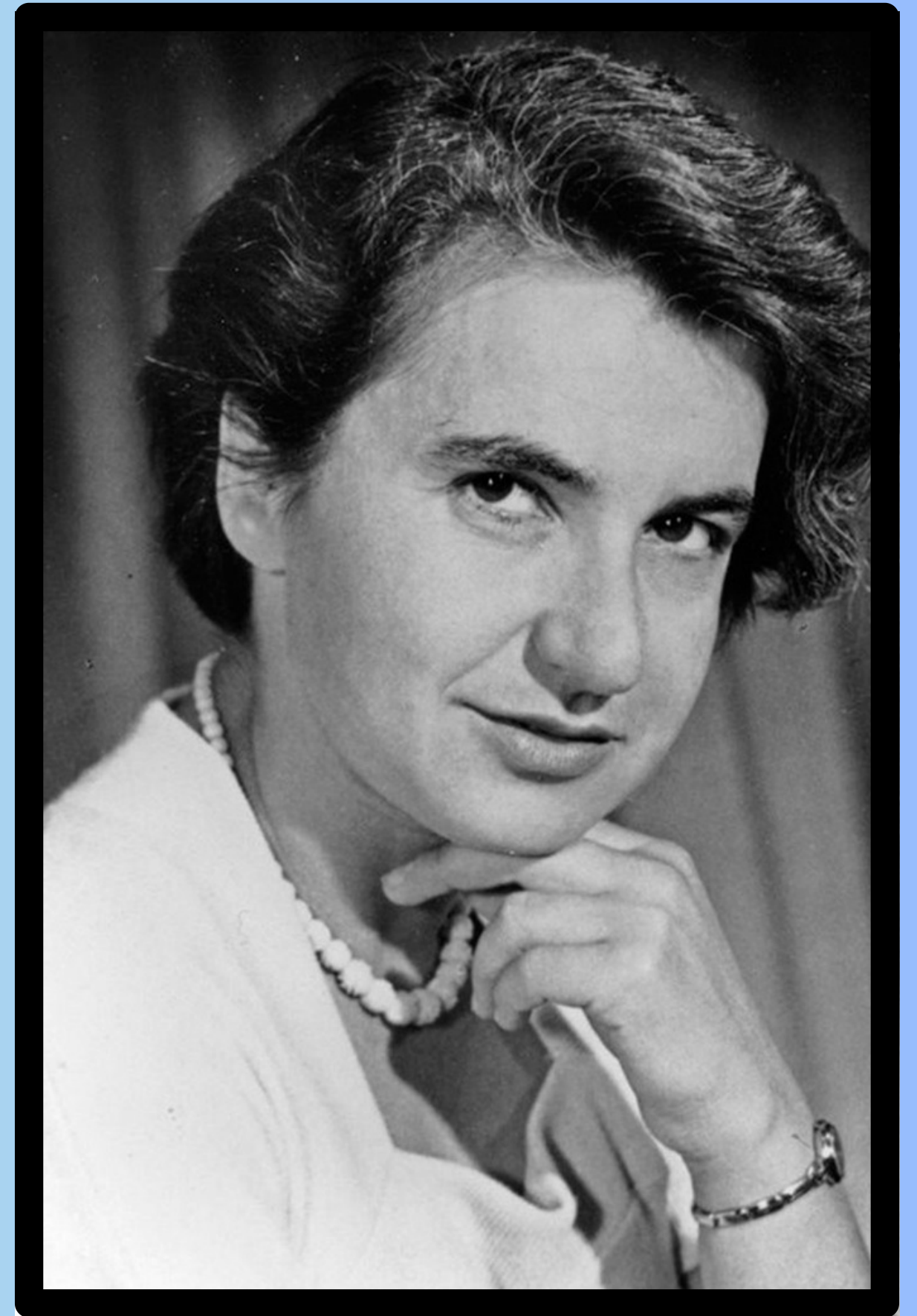


ROSALIND FRANKLIN

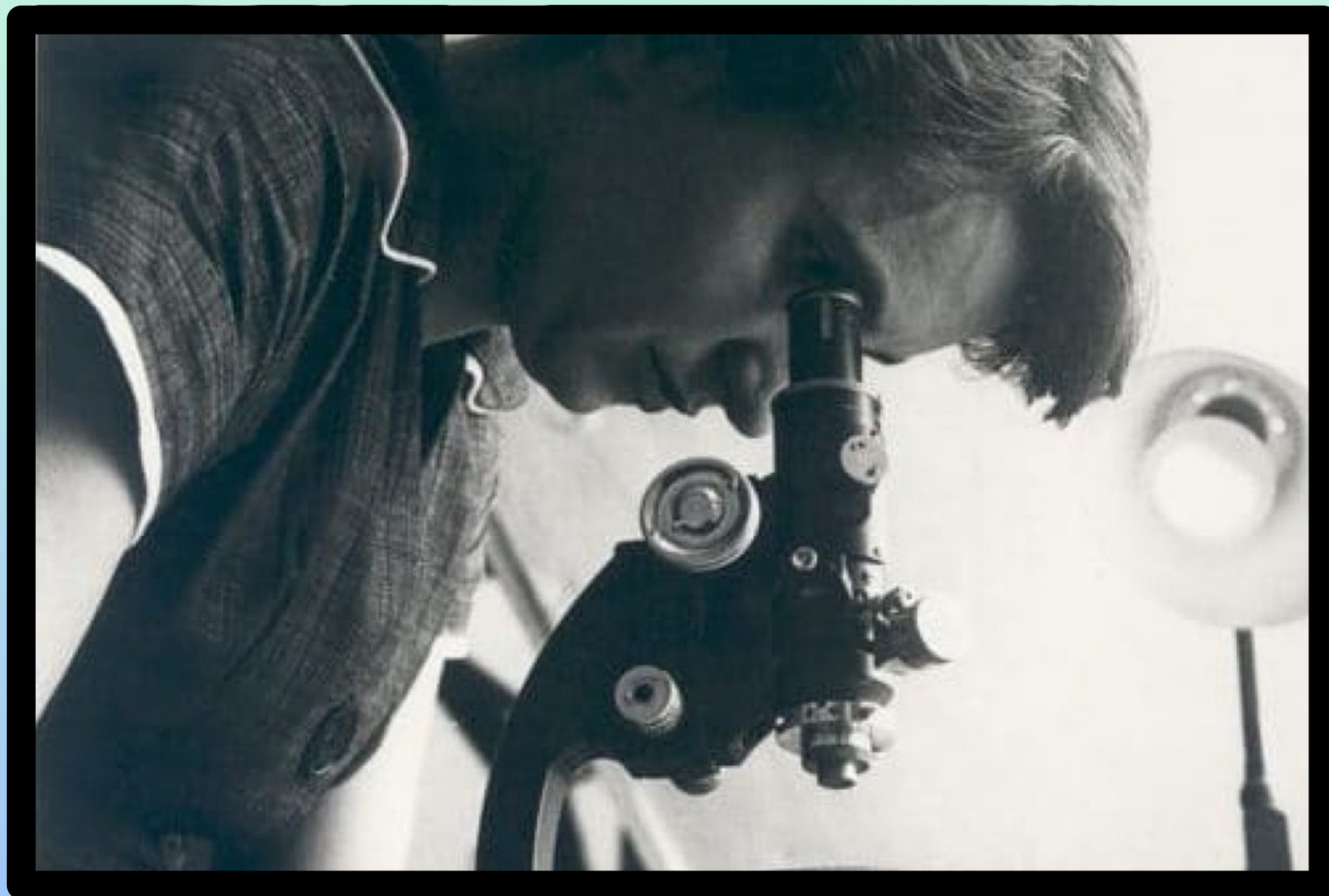


CHI ERA?

Era una biologa, fisica e cristallografa britannica. È meglio conosciuta per i suoi studi sulla struttura del DNA, che hanno contribuito in modo significativo alla scoperta della sua struttura a doppia elica. Ha usato la tecnica della diffrazione dei raggi x per studiare la struttura molecolare di DNA.

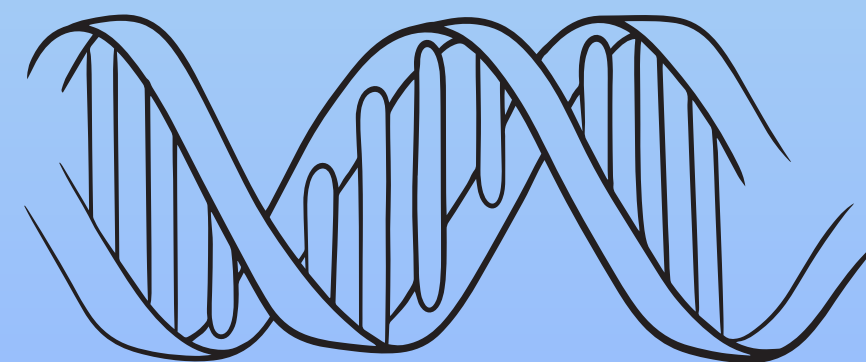


Londra, 15 Luglio, 1920 – Londra, 16 Aprile, 1958



STUDI E LAVORO

Franklin studiò chimica e fisica all'Università di Cambridge. Dopo aver completato gli studi, ha lavorato come ricercatrice al King's College di Londra, dove ha condotto le sue ricerche sulla struttura del DNA.



PREMI

Fu candidata al Premio Nobel per la chimica nel 1962, ma non lo ricevette mai a causa della sua prematura morte.





BIBLIOGRAFIA

- **The Double Helix:** Libro, scritto dal co-scopritore della struttura del DNA, include una descrizione di come il lavoro di Franklin sia stato utilizzato per raggiungere la scoperta.
- **The Woman Who Knew Too Much:** Libro include una sezione sul lavoro di Franklin sulla struttura del DNA e la sua morte prematura.
- **Rosalind Franklin and DNA:** Libro, scritto da un'amica di Franklin, descrive la sua vita e il suo lavoro sulla struttura del DNA.
- **The Dark Lady of DNA:** Libro è una biografia completa di Franklin e del suo lavoro sulla struttura del DNA.
- **The Forgotten Pioneer of DNA Research:** Libro che fornisce una panoramica della vita e delle opere di Franklin, ripercorrendo la sua carriera e il suo contributo alla scienza della biologia molecolare.





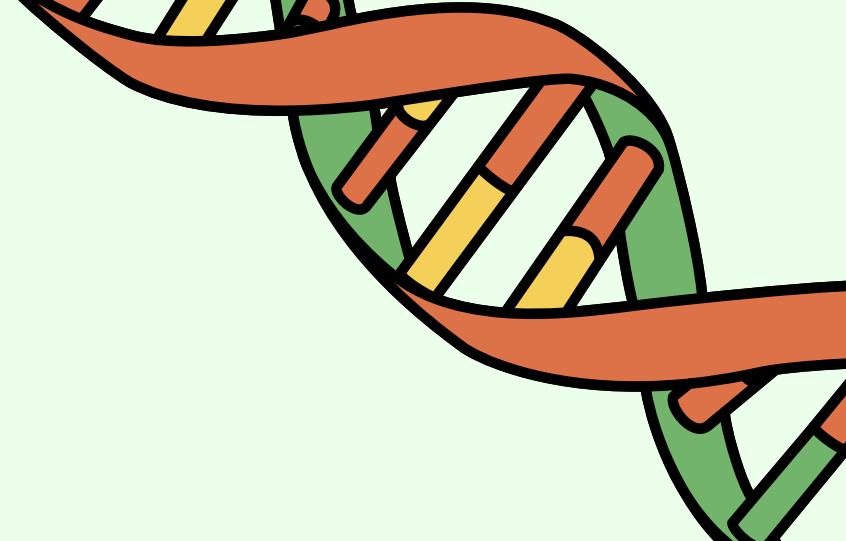
INTERVIEW - 1

- **How did you approach the study of biochemistry?**

"I approached the study of biochemistry thanks to my training in physics and the passion for scientific research. I started working in the field of X-ray crystallography, which allowed me to study the molecular structure of biological substances such as proteins and deoxyribonucleic acid (DNA)"

- **What inspired you to become a scientist?**

"I became a scientist because I have always had a great curiosity for the world around me and I wanted to understand it thoroughly through science. My passion for chemistry and physics was nurtured by my family and education, and I chose to study these subjects because they were the only ones who provided the answers to my deepest questions about the laws of nature"





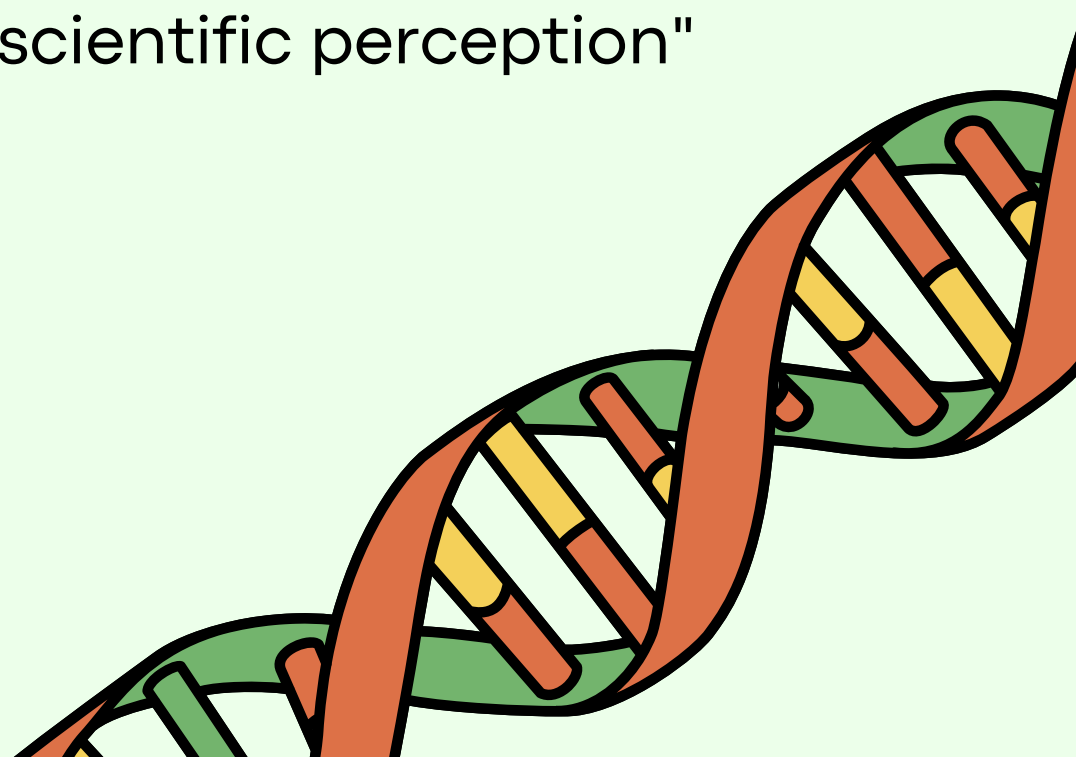
INTERVIEW -2

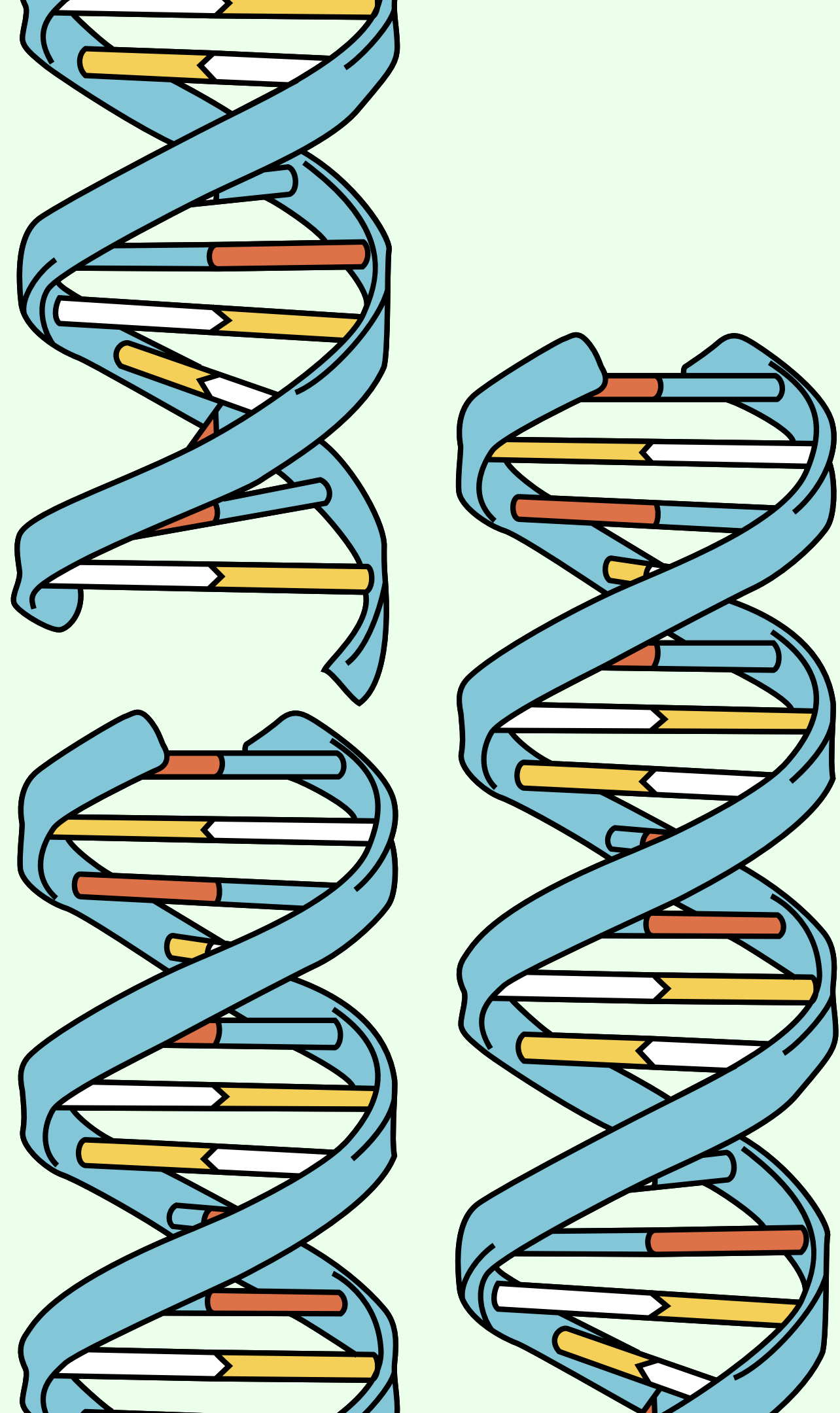
- **What were your most significant research?**

"My most significant research focused on the structure of DNA using X-ray crystallography"

- **How would you describe your work style and approach to scientific research?**

"My work style is based on the scientific and systematic approach. I am very fussy about the accuracy and accuracy of my data, and I make sure that every experiment is conducted as accurately as possible. I am very careful in observing and interpreting the results, always trying to create connections between them and to draw meaningful conclusions. My research is based on logical deduction and critical analysis of data, in order to bring to light new knowledge and change scientific perception"





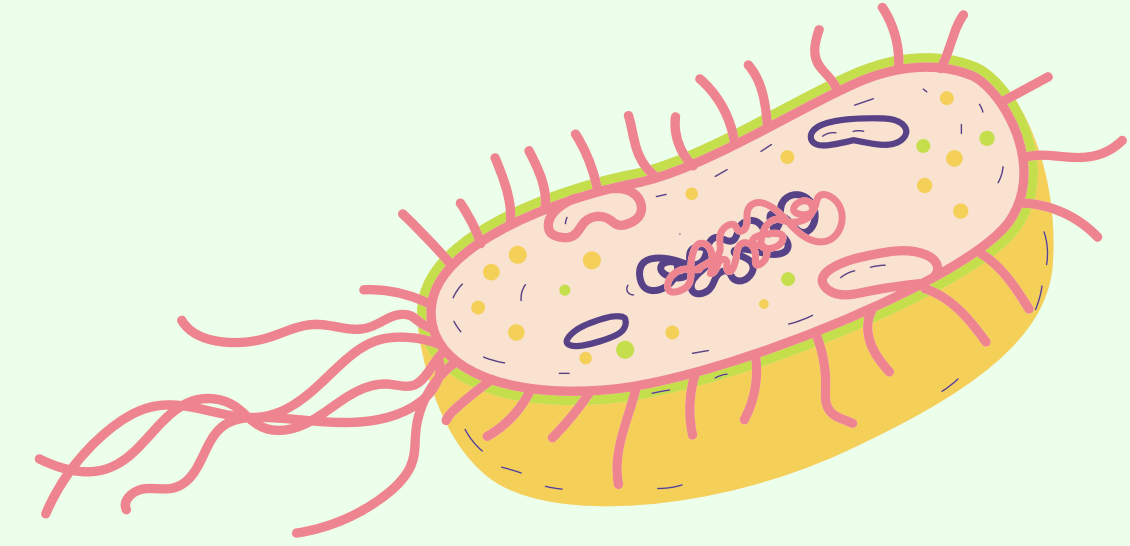
DISCOVERY AND CONTRIBUTION

His scientific contribution in history, in addition to the discovery of DNA structure, was to obtain diffraction images of the molecule's X-rays. These images provided important information on the three-dimensional structure of the double helix and allowed to deduce the presence of two complementary chains of nucleotides and the antiparallel arrangement of the same.

OTHER

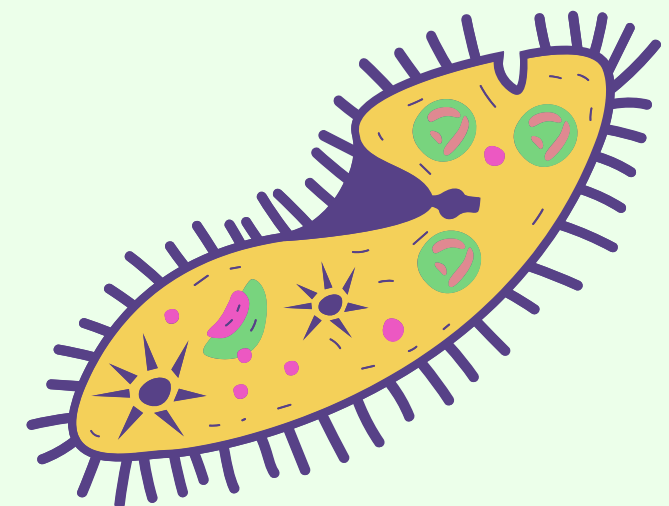
A yellow arrow with a decorative, looping tail points from the 'OTHER' box towards the right side of the page.

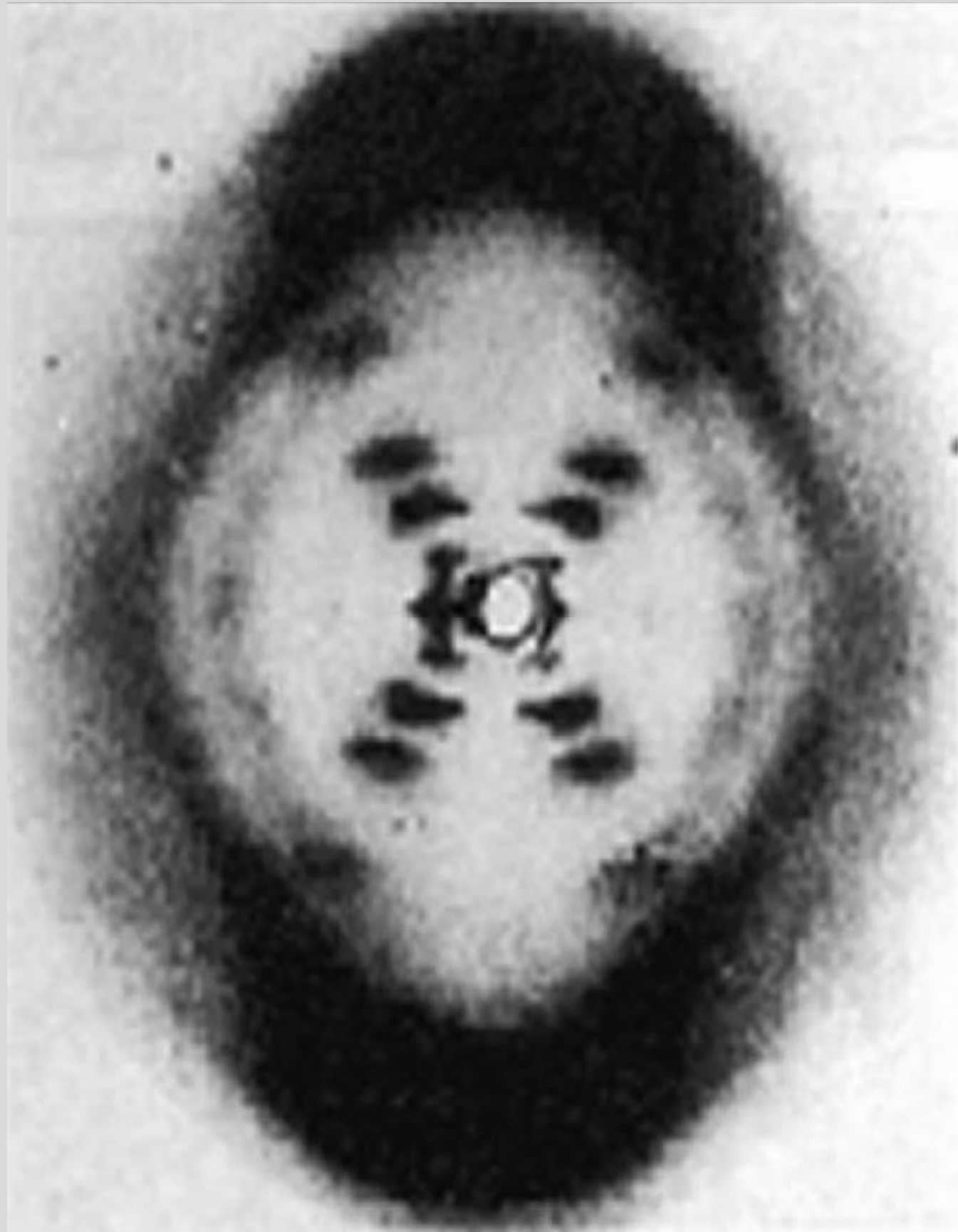
CONTRIBUTION



Despite her extensive work on DNA, most of her contributions were ignored during the discovery of DNA structure because she did not expect a woman to occupy such a high position in science. The image he created using X-ray diffraction techniques was instrumental in understanding the double helix structure of DNA, but was not appreciated until much later.

In addition to his DNA research, Franklin has also contributed to understanding the structure of viruses and carbohydrates in medicine and food research.





FONTI

https://it.wikipedia.org/wiki/Rosalind_Franklin

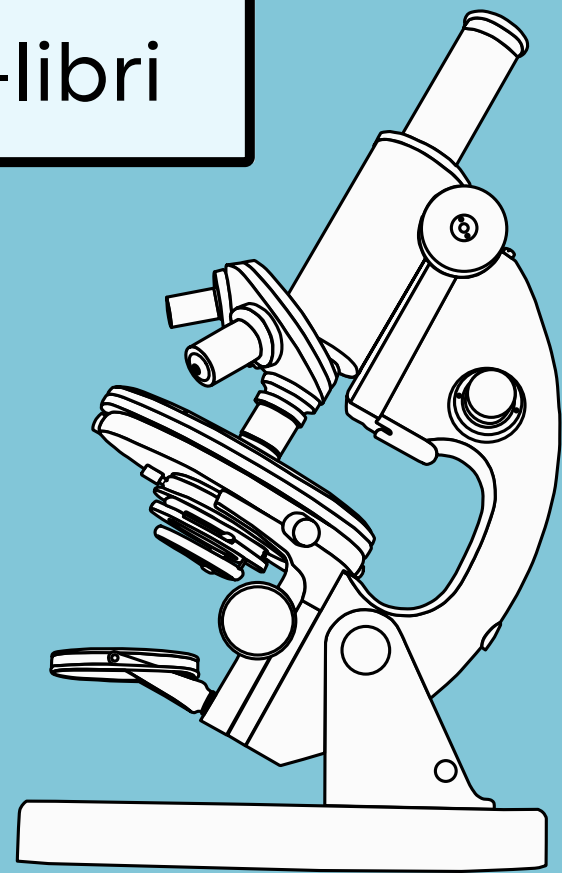
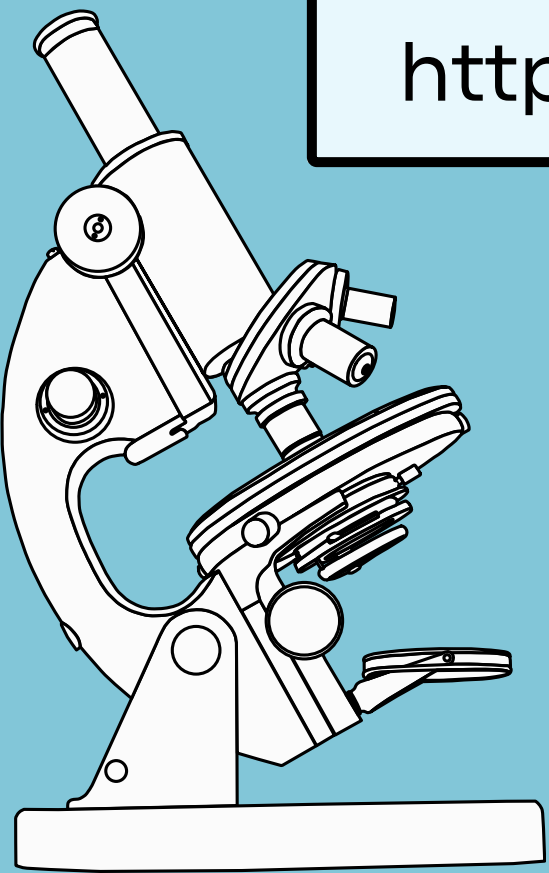
https://www.storicang.it/a/rosalind-franklin-e-struttura-dna_15270

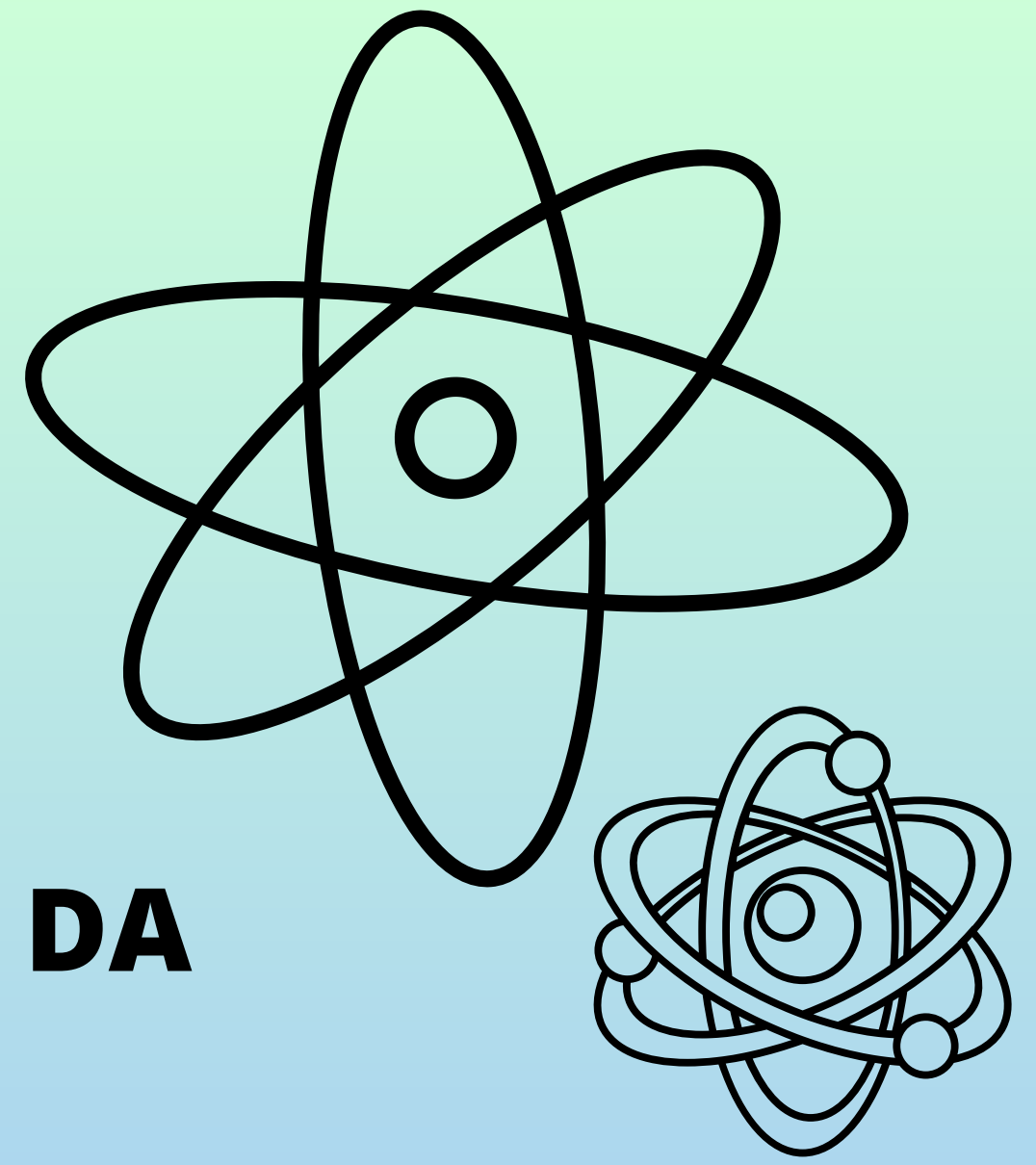
<https://privatebanking.bnpparibas.it/content/bnlpb/it/it/youmanist/magazine/cultura/rosalind-franklin-dna.html>

<https://www.treccani.it/enciclopedia/rosalind-franklin/>

<https://ilbolive.unipd.it/it/news/70-anni-doppia-elica-ruolo-rosalind-franklin>

<https://maremosso.lafeltrinelli.it/news/scoperta-dna-rosalind-franklin-libri>





**PRESENTAZIONE REALIZZATA DA
Giada Lazzarin**

